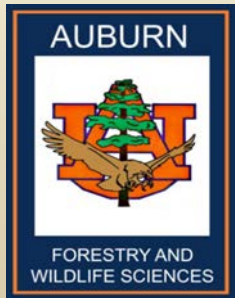


Update of Herbicide Trials

FY 2017 SFNMC Advisory Meeting
Auburn, AL



Nina Dowling Payne
Southern Forest Nursery
Management Cooperative
Auburn University
November 9, 2016

Studies installed in 2016

All studies designed to test seedling tolerance and herbicidal effectiveness

- *Pendulum[®] AquaCap[™] (PAC) container trial*
- *2 outplanting trials*
- *3 'new' herbicides (bareroot)*
- *Marengo[®] container trial*
- *Goosegrass trial (bareroot)*

Pendulum® AquaCap™ container trial

- Second PAC container study
- Installed at IFCO Moultrie, GA nursery
- Includes loblolly, slash, longleaf and shortleaf pine (450 trays)
- Applications made 1X week for 6 weeks to capture willow seed dispersal
- Trays sprayed on day of sowing or +1
- Target weeds are willow, annual sedge, spurge and grasses



Status of Pendulum® AquaCap™ container trial

- Taken down in October – seedling, willow and weed counts, weed ID



- Currently processing seedlings (3000)



- Research Report available in 2017

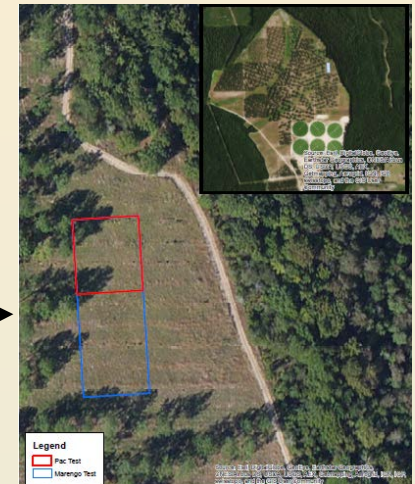
Outplanting trials

- To determine carryover effect of 2 herbicides on container loblolly
- Planted seedlings from Westervelt 2015 PAC and Marengo[®] studies



← Eutaw, AL site

DeRidder, LA site →



Status of Outplanting trials

- Maintenance done by Westervelt and IFCO staff
- Field measurements to be made in winter 2016-17
- Results available in PAC and Marengo[®] research reports in 2017

3 'new' herbicides trial

- Need currently exists for safe **post-emergent** herbicides to control sedges, grasses and broadleaf weeds
- Applications of 3 selected herbicides made at sowing, and 8, 13 and 16 weeks post-sowing
- 18 installations made in 4 nurseries in bareroot lob and slash



Envoke®
trifloxysulfuron

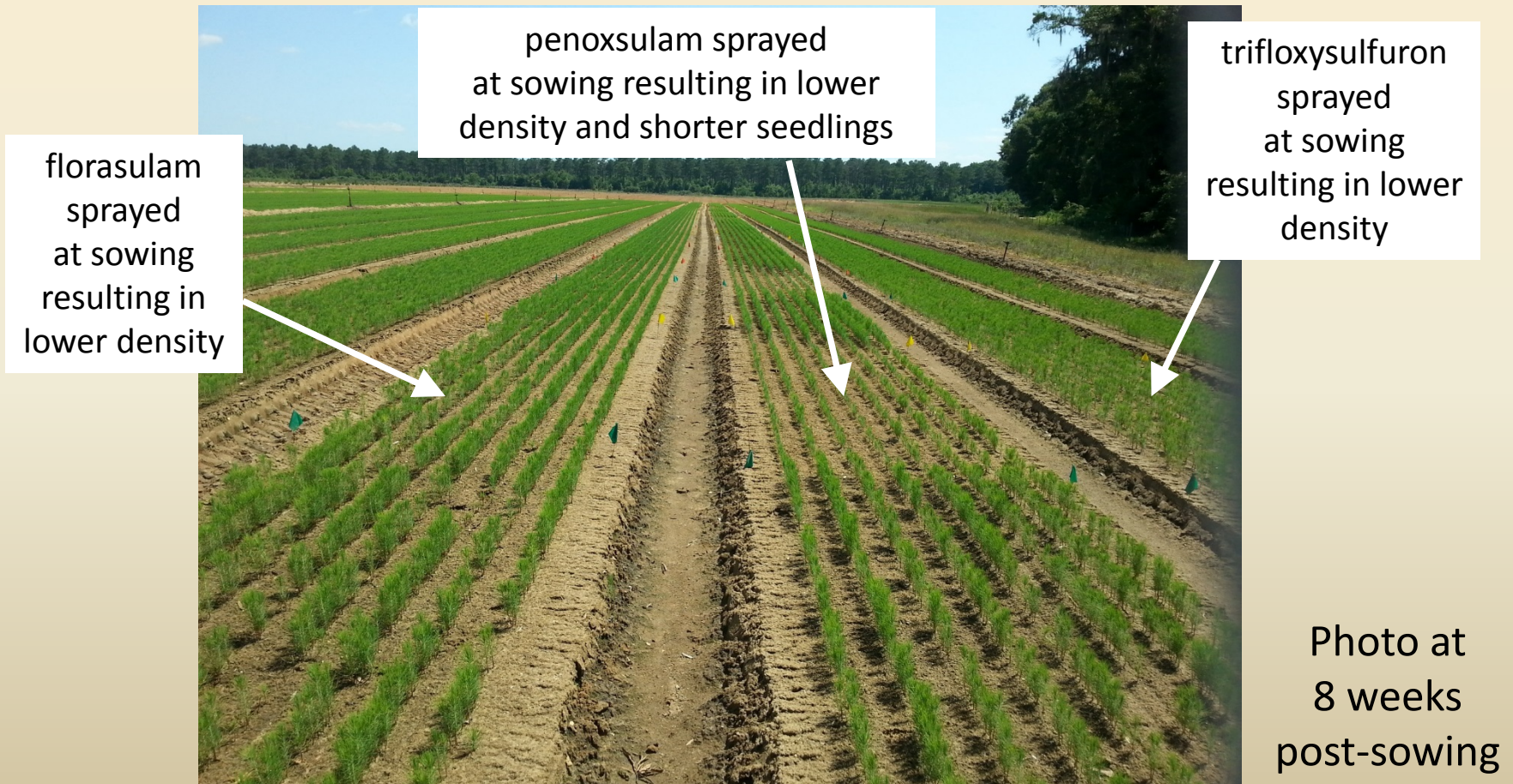
Grasp®
penoxsulam

Defendor™
florasulam



Status of 3 'new' herbicides trial

- Weed counts and identification done in September
- Seedling counts and processing will be done late 2016
- Research Report available in 2017



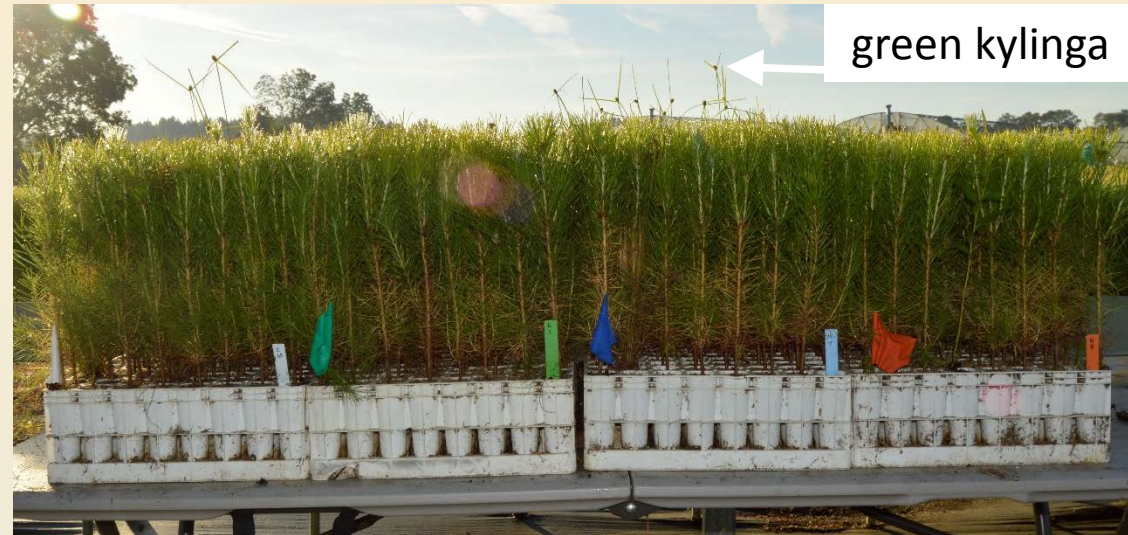
Marengo[®] container trial

- Third Marengo[®] container study
- Installed at IFCO Moultrie, GA nursery
- Includes loblolly, slash, longleaf and shortleaf pine (320 trays)
- Applications made at 6 weeks post-sowing for each species
- Target weeds are willow, annual sedge, spurge and grasses



Status of Marengo[®] container trial

- Initial seedling and weed counts made at study installation
- Taken down in October - seedling, willow and weed counts, weed ID



green kylinga
rhizomes



Status of Marengo[®] container trial, continued

- 480 seedlings placed in aerated tanks for 4-6 weeks to determine Root Growth Potential (RGP) by speciesXrate



- Currently processing seedlings (1600)
- Research Report available in 2017



Goosegrass trial

- Need currently exists for safe **post-emergent** herbicides to specifically control goosegrass (*Eleusine indica*)



- Applications of 1 recommended herbicide (sulfentrazone) made at sowing, and 8, 13, 8 & 13 and 16 weeks post-sowing
- 2 installations made in 1 nursery in bareroot lob and slash



Status of Goosegrass trial

- Weed counts and identification done in September (no goosegrass problem this year!)
- Seedling counts and processing will be done late 2016
- Sulfentrazone is recommended for *Cyperus compressus* control on the Spartan[®] 4F herbicide label
- Research Report available in 2017



Contact information

Nina Dowling Payne
nurserycoop.auburn.edu
nina.payne@auburn.edu
334-844-4917